



EXPANDING OUR SACRED SPACE

The Church of the Annunciation's Master Plan is a proposal for a vibrant and growing future. A key component was the realization that the Sacred Space of our 112 year old cemetery could become a park like setting. Our cemetery is consecrated ground where we respectfully and lovingly dignify the human remains of our loved ones. The overall design provides a place for prayer and meditation, as well as a suitable place to memorialize our loved ones.

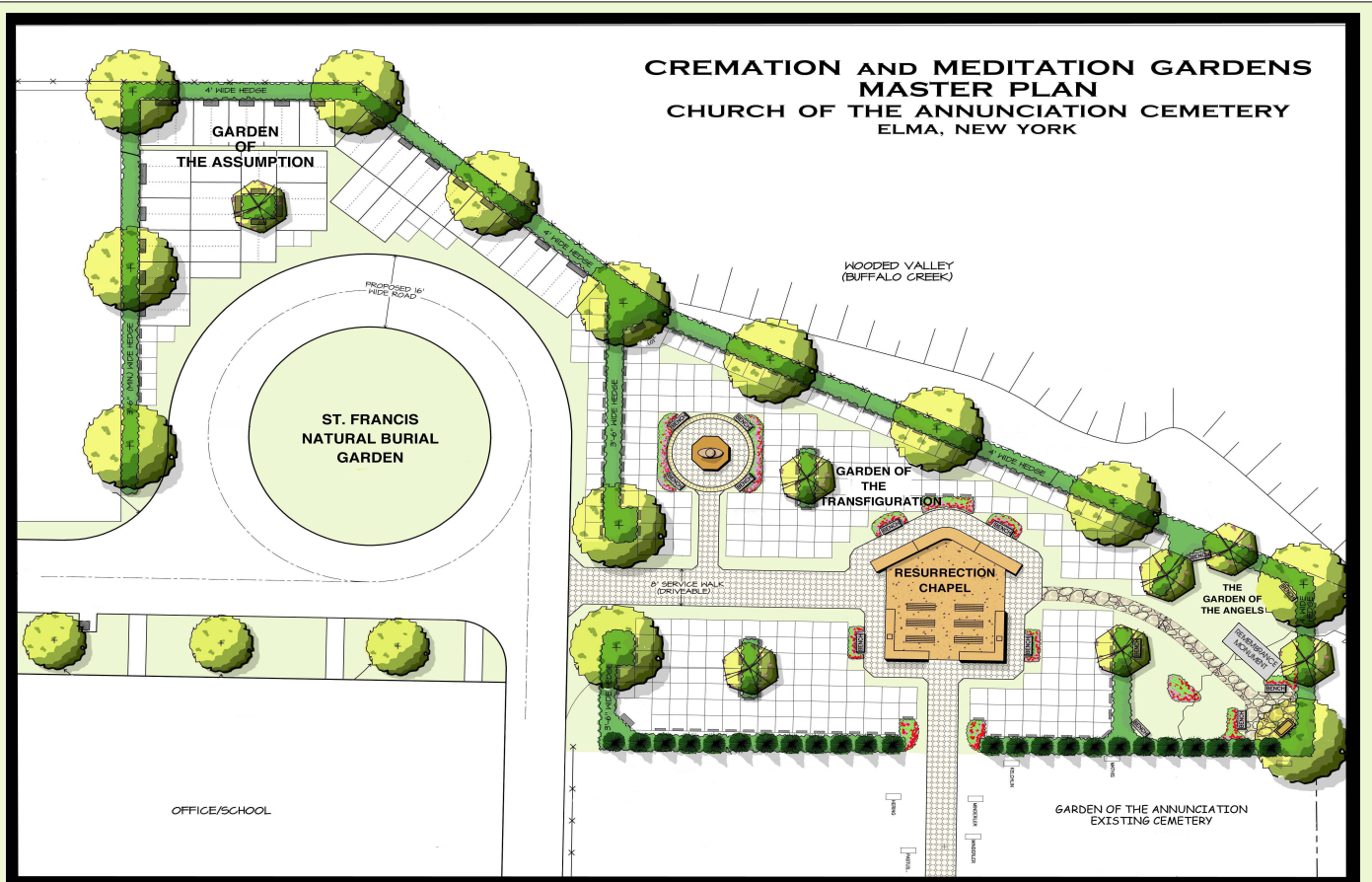
The Catholic Church's traditional practice of interring the body of the deceased dates from the time of Christ, in imitation of the burial of Our Lord's body in the tomb after the crucifixion. This practice is the Church's normal and preferred manner of interment. The Church does, however, permit cremation, with the provision that the remains be properly interred.

On May 8, 1963, the now Congregation of the Doctrine of Faith lifted the age-old ban on cremation and was incorporated into the revised Code of Canon Law.

MEMORIALS AND DONATIONS

We understand that memorializing your loved ones is a wonderful expression of faith, hope and love. You may choose to donate to a particular item or to the cemetery project in memory of your loved one. Some of the memorial opportunities are: statuary art work, benches, trees, flowers/shrubs and the Remembrance Monument. Major project opportunities are: Resurrection Committal Chapel, Columbaria and Chapel granite altar. Please contact Deacon Jim through email at deacon.jim.jaworski@gmail.com or call him at the Parish Office at 716-683-5254 if you are interested.

**CREMATION AND MEDITATION GARDENS
MASTER PLAN
CHURCH OF THE ANNUNCIATION CEMETERY
ELMA, NEW YORK**



ANNUNCIATION CEMETERY BURIAL OPTIONS

FULL BODY BURIAL

• **In-ground burial**

- Upright monument full casket burial sites in the Garden of the Annunciation and Garden of the Assumption
- Flush marker full casket burial sites in the Garden of the Annunciation and Garden of the Assumption
- St. Francis Natural Burial Garden
- Family plots of 4-6 graves are available

CREMATION

• **Above-ground burial**

- A columbarium is a free-standing unit with niches for the burial of cremated remains
 - A niche is a small crypt in the columbarium for the entombment of cremated remains. Each niche accommodates two sets of cremains.
- Resurrection Committal Chapel four columbaria for cremains:
 - Divine Mercy
 - Sacred Heart
 - Christ the King
 - Prince of Peace
- Cremorial benches of 2-4 niches

• **In-ground burial**

- Upright monument and flush marker memorial for cremains plots/graves in the Garden of the Transfiguration and St. Francis Natural Burial Garden.

We are reminded in the funeral liturgy that our Catholic Christian belief is that death is not the end but the very beginning of our eternal life with our Lord Jesus Christ. Our belief and devotion to the Lord does not stop when we die, rather we continue to pray for those who have gone before us as a sign of faith and hope that we will one day be in heaven with our God. At our cemetery we celebrate the life of our loved ones as we joyfully and emotionally entrust them to God.

Our cemetery has multiple choices and options. There are in-ground burial spaces in single, companion or family plots for full body burial or cremated remains. The centerpiece of the cemetery expansion is the new Resurrection Committal Chapel that houses four free standing columbaria. Each columbaria has niches for the burial of cremated remains with each niche accommodating two sets of cremains. The Resurrection Chapel will have an altar for outdoor Mass and where Burial Rites of Committal will be celebrated.

The four columbaria structures, Divine Mercy, Sacred Heart, Christ the King and Prince of Peace, are made of Rock of Ages premium Vermont granite. Each niche will have an engraved face plate with names and birth and death years.